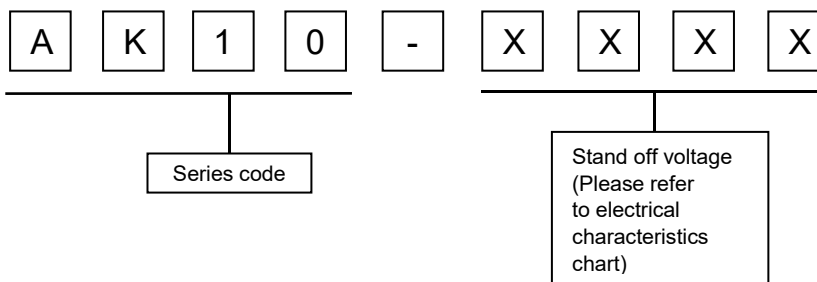


Features

- High current transient suppressors.
- Bi-directional
- Excellent Clamping Capability.
- Glass passivated chip
- Hazardous Substances Free.
- Low slope resistance
- RoHS Compliant.
- High Temperature soldering: 260°C/10 seconds at terminals
- Epoxy Encapsulated.
- UL certified



Part Number Code



Mechanical Characteristics

Parameter	Symbol	Value	Units
Operating Storage Temperature Range	T _{STG}	-55 to+150	°C
Operating Junction Temperature Range	T _J	-55 to+150	°C
Current Rating	I _{PP}	10	Kamps

Note:
Rated I_{PP} measured with 8/20μs pulse.

Electrical Characteristics (TA=25°C unless otherwise noted)

Type Number	Reverse Stand-Off Voltage		Breakdown Voltage	Test Current	Current Rating	Maximum Clamping Voltage	Reverse Leakage
	V _{AC}	V _{DC}	V _{BR}	I _T	8/20μs@I _{PP}	V _C	I _R @V _{DC}
	V	V	V	mA	KA	V	μA
AK10 – 030C	21	30	33	10	10	60	20
AK10 – 058C	40	58	64	10	10	110	20
AK10 –350C	250	350	375	10	10	498	20
AK10 –380C	275	380	401	10	10	520	20

Ratings and Characteristic Curves (TA=25°C unless otherwise noted)

Fig. 1 - Pulse Derating Curve

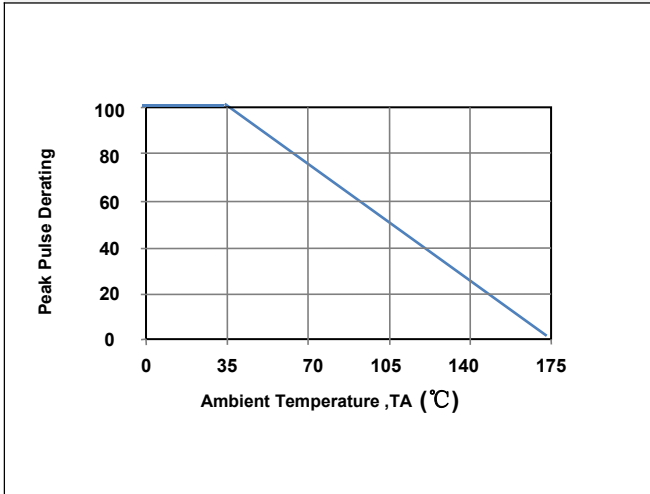
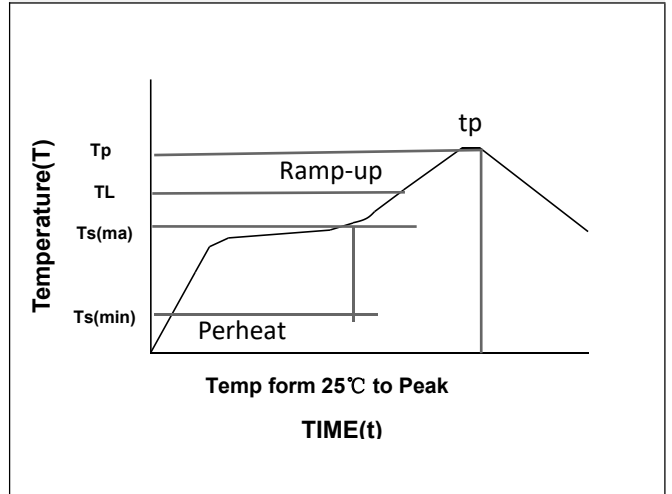
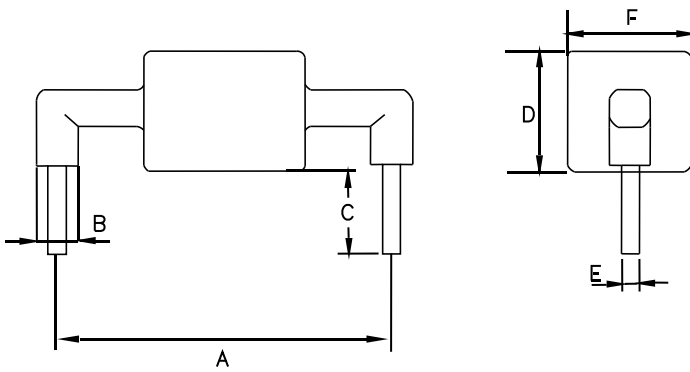


Fig. 2 - Soldering Parameters



Dimensions



DIM	Millimeters	Inches
A	24.15±0.70	0.95±0.028
B	max4.0	Max0.158
C	7.0±0.5	0.276±0.019
D	Max16	Max 0.630
E	1.3±0.10	0.051±0.004
F	Max14.5	Max 0.571